

## Charts

CHART 1

	Membership	Mem%	Seats	Seats%	Votes	Votes%	
LibDem	4000		2	5	4	297522	7
Lab	19000		11	24	19	950180	21
Con	12000		7	31	24	1026066	23
Snp	125000		74	63	49	2013484	45
Green	8000		5	6	5	163598	4
	168000		100	129	100	4450850	100

	Members	Seats	Votes	InterviewLength	
Con	7	7	24	23	30
Lab	11	11	19	21	27
Snp	74	74	49	45	24
LibDem	2	2	4	7	20
Green	5	5	5	4	0

Chart 1

### Party strength not reflected in interviews

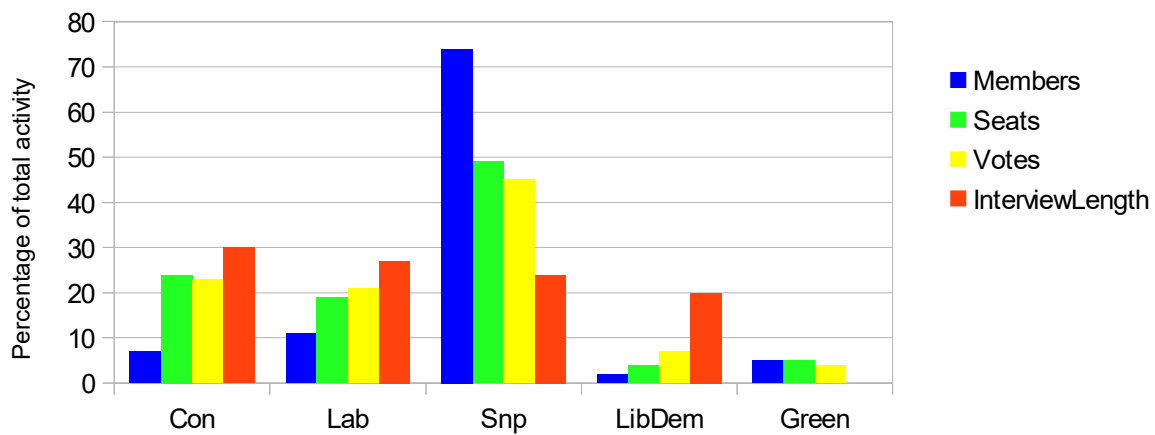


CHART 2

	InterruptPer50(Interrupt%)	HostileLength	HostileLength%	TurnLength	TurnLength%	
Cable	0	0	24	26	23	21
Corbyn	31	44	3	3	8	7
May	0	0	11	12	25	23
Brown	0	0	22	24	18	17
Davidson	12	17	7	8	22	20
Blackford	27	39	25	27	12	11
	70	100	92	100	108	100

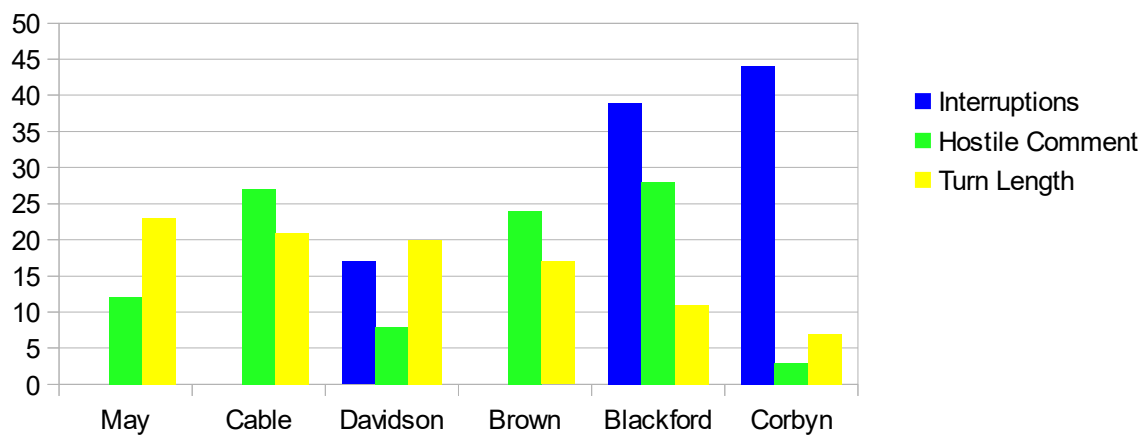
	Interruptions	Hostile Comm	Turn Length
May	0	12	23
Cable	0	27	21
Davidson	17	8	20

### Charts

Brown	0	24	17
Blackford	39	28	11
Corbyn	44	3	7

Chart 2

## Discrimination against some politicians



## Charts

InterviewLeng	InterviewLength%
104	20
142	27
157	30
125	24
0	0
528	100

## Charts